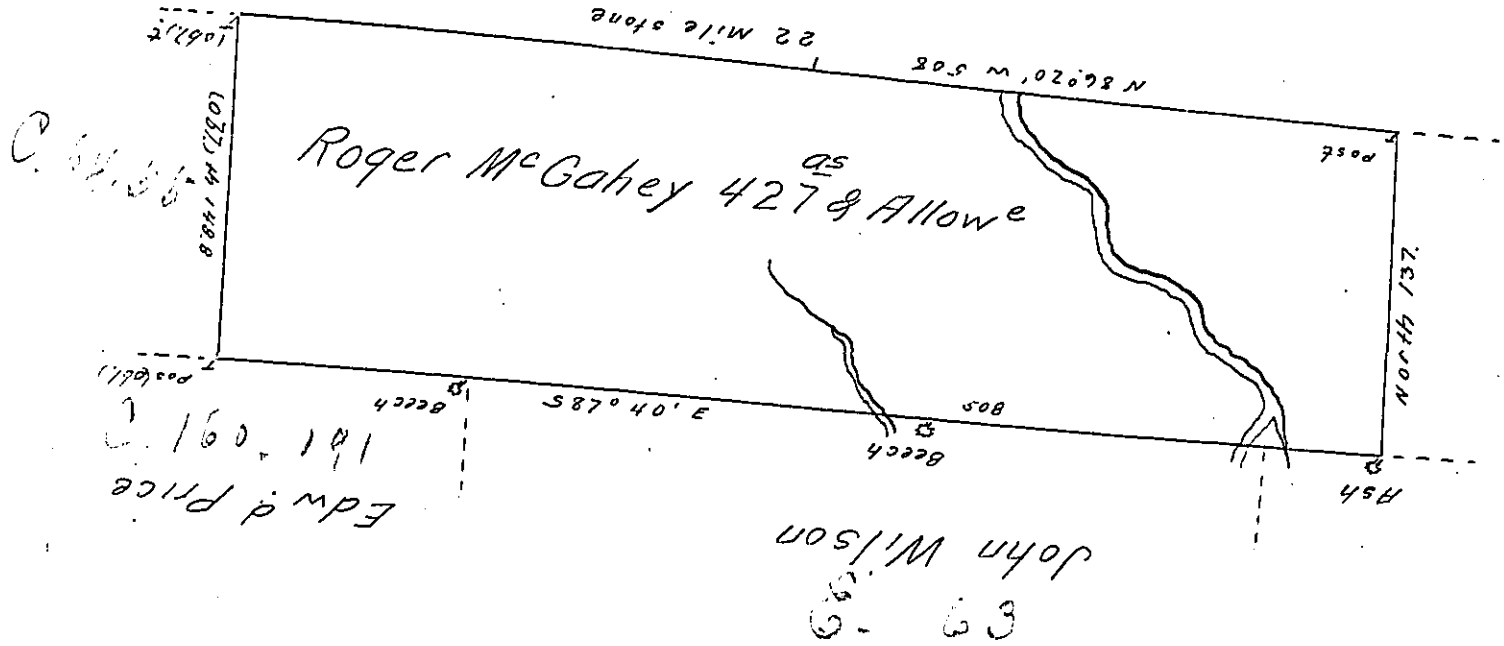


State of New York



A Draught of a tract of land Called - Situate on Snake C (obl.)
 Joining the Boundary Line of the State of Pennsy.^a in Luzerne (obl.)
 -ly Northum^d) County Containing four Hundred & Twenty Sev (obl.)
 acres & Allow^e of Six p. Cent for Roads &c. Surveyed for Ro (obl.)
 McGahey the 16th Day (obl.) 178 (obl.) in Pursuance (obl.) Warrant Dated
 the 4th Day of April 1785. by

T. W^m Gray D. S.
 John Lukens Esqr. }
 Surv^r Gen. }

W^t N^o 673 North^d C^o

IN TESTIMONY that the above is a copy of the original remaining on file in
 the Department of Internal Affairs of Pennsylvania, made
 conformably to an Act of Assembly approved the 16th day of
 February, 1833, I have hereunto set my Hand and caused
 the Seal of said Department to be affixed at Harrisburg,
 this seventeenth day of November 1905.

Isaac B. Brown
 Secretary of Internal Affairs.